

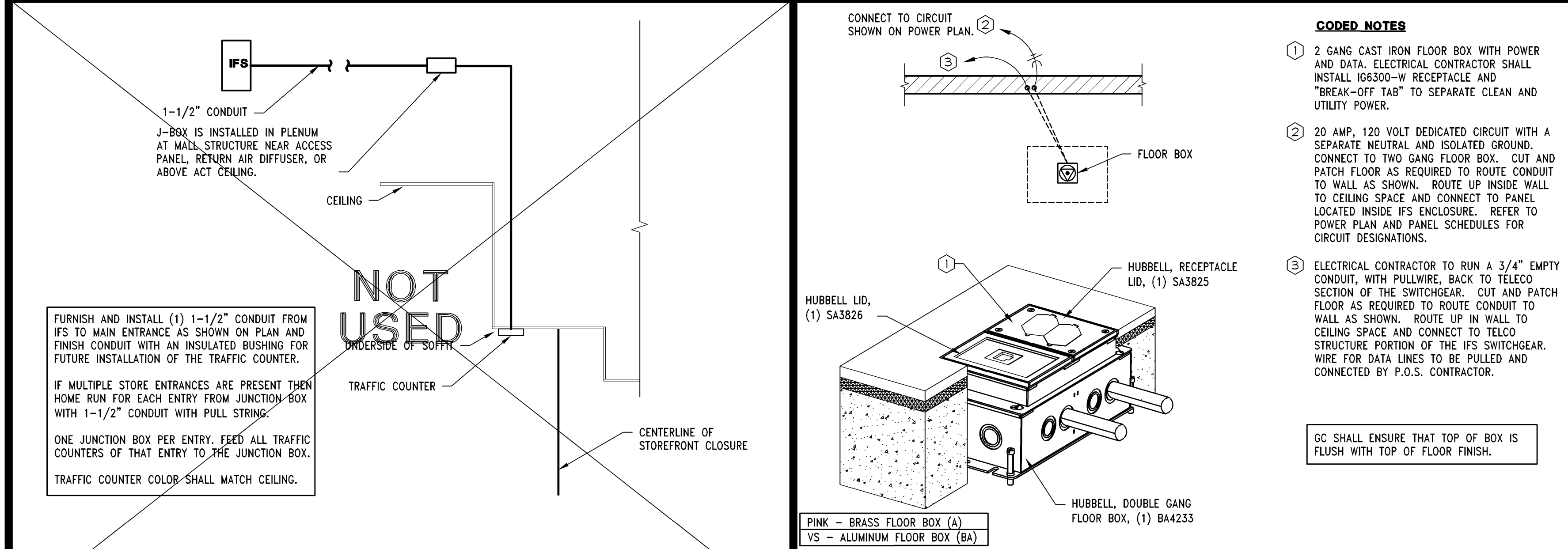
FITTING ROOM PAGING SYSTEM

3/8" = 1'-0"

05D-E0402-L01-PAGE

02/21/14

L



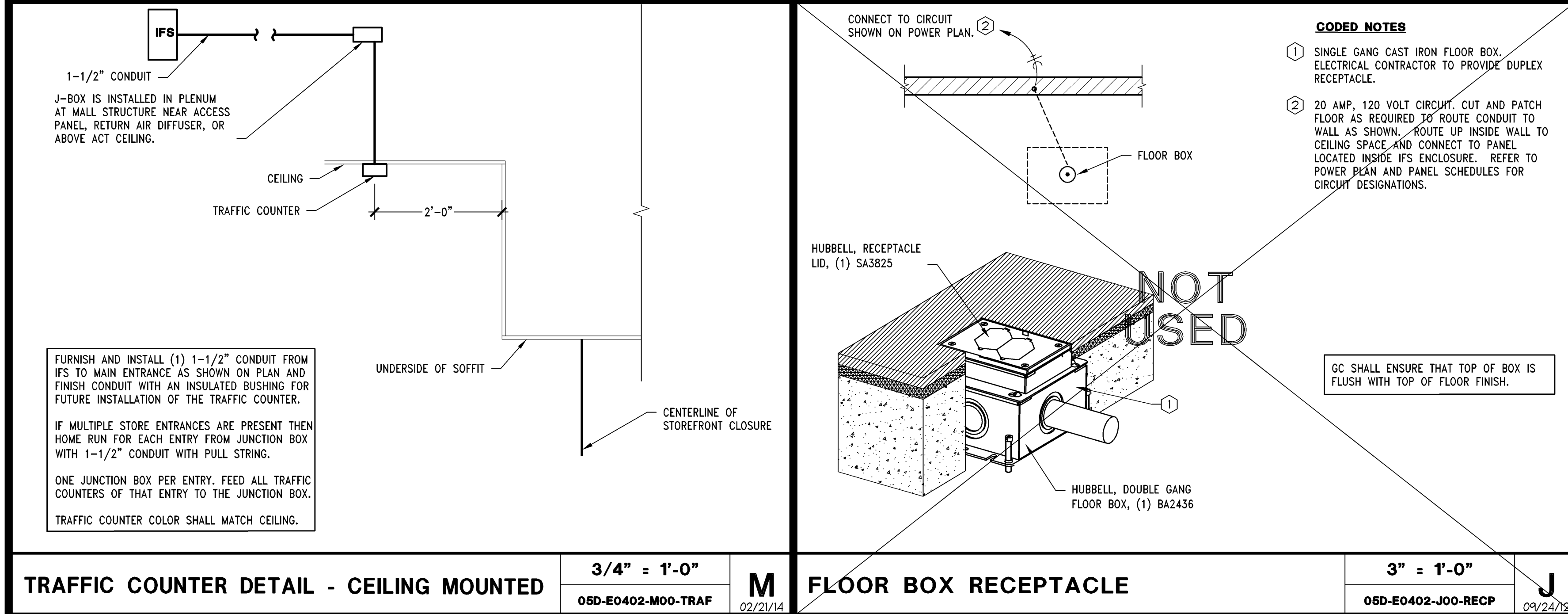
TRAFFIC COUNTER DETAIL - VS

3/4" = 1'-0"

05D-E0402-M00-TRAF

02/21/14

N



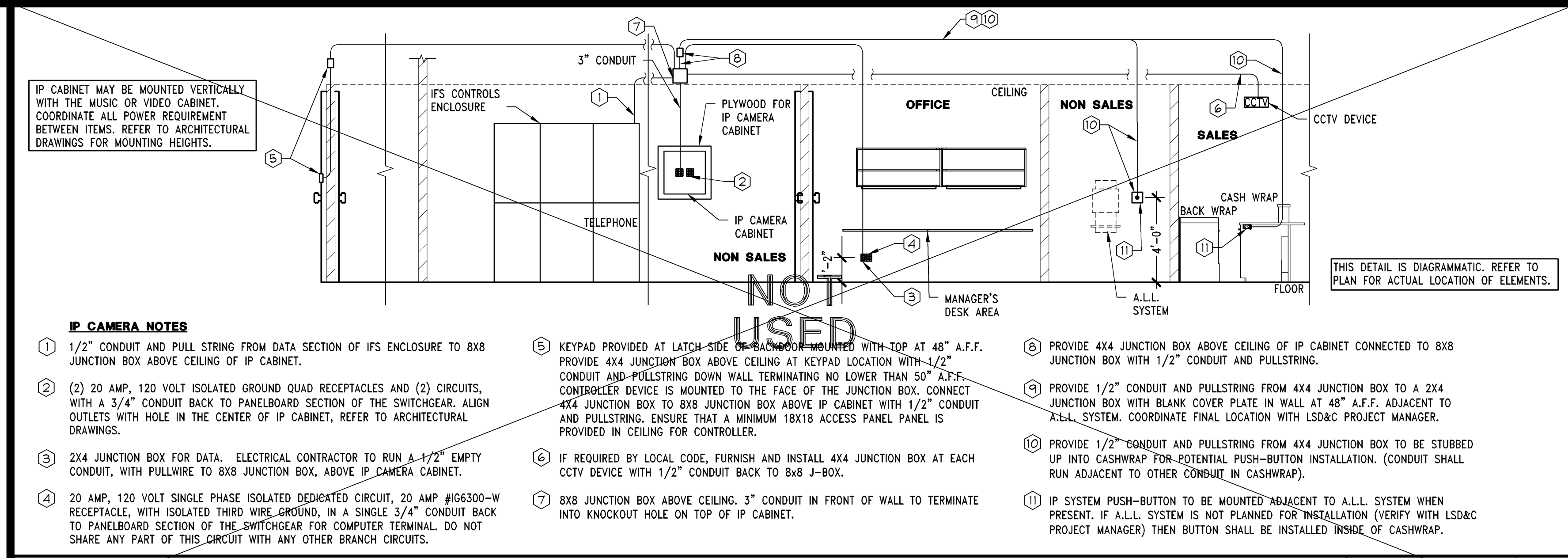
TRAFFIC COUNTER DETAIL - CEILING MOUNTED

3/4" = 1'-0"

05D-E0402-M00-TRAF

02/21/14

M



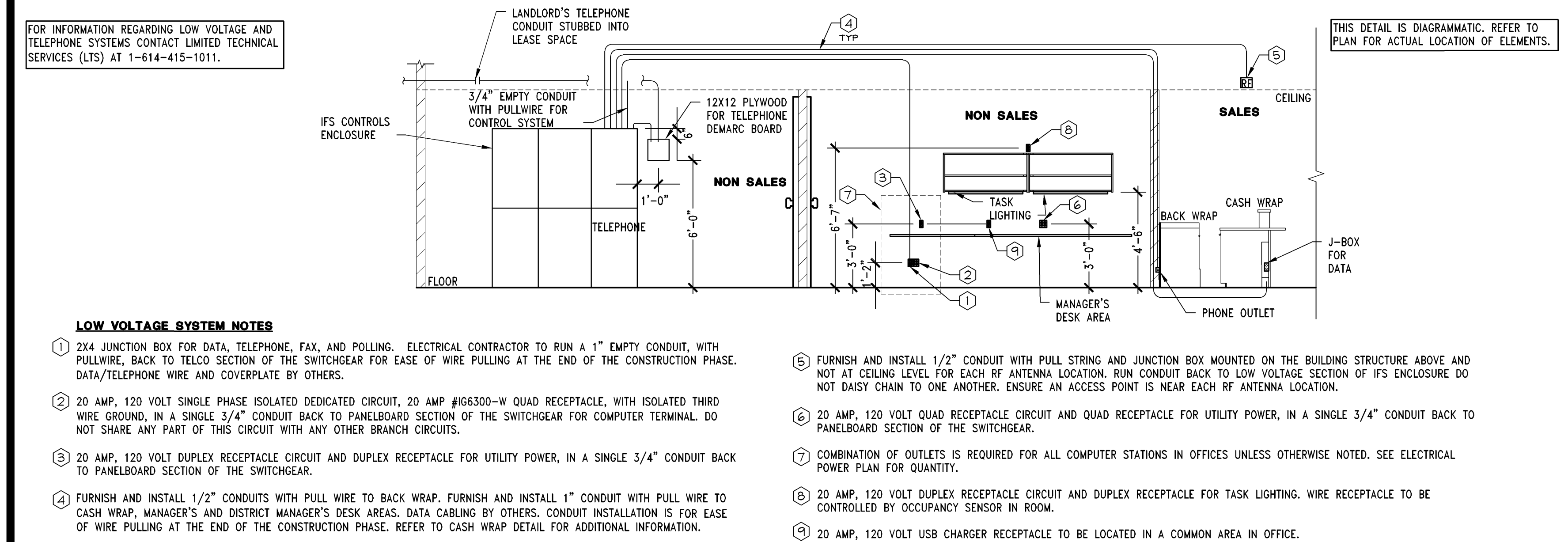
IP CAMERA SYSTEM

1/4" = 1'-0"

05D-E0402-D00-IPCM

09/19/13

D



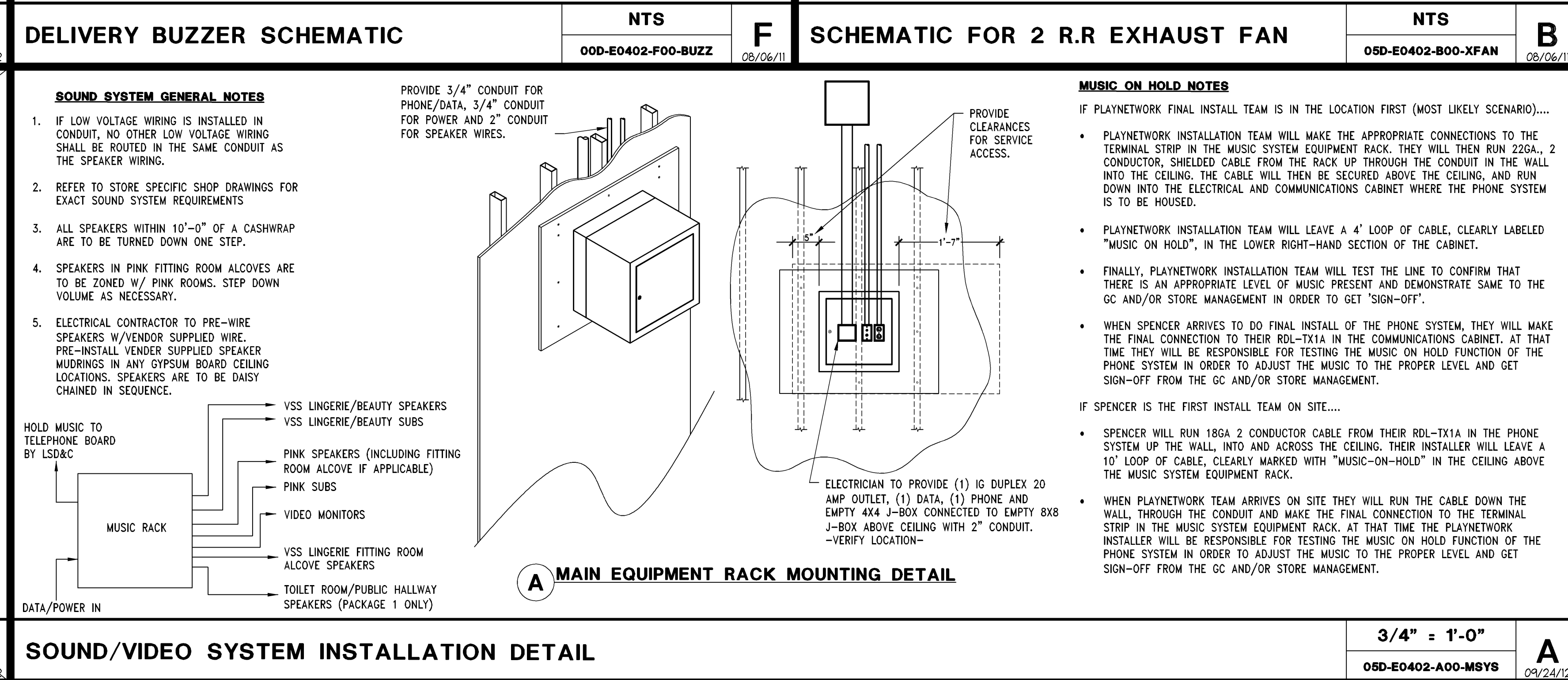
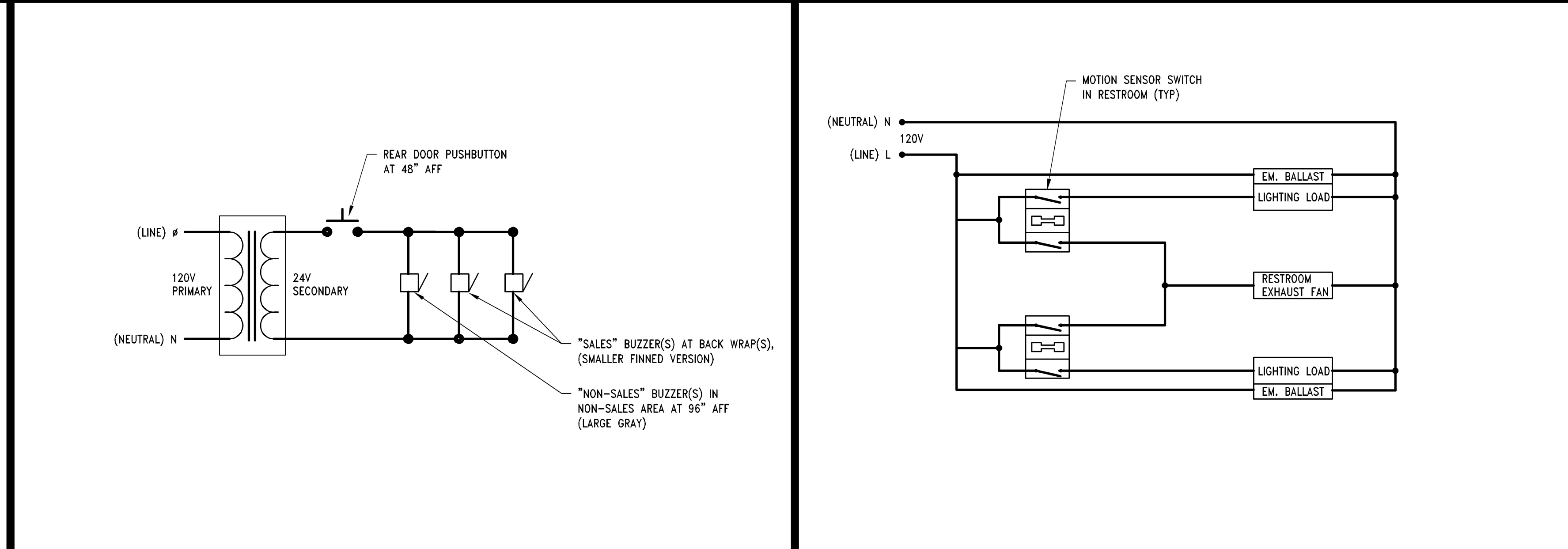
LOW VOLTAGE SYSTEM SCHEMATIC

1/4" = 1'-0"

05D-E0402-C00-LVLT

01/17/14

C



SCHEMATIC FOR 2 R.R EXHAUST FAN

3/4" = 1'-0"

05D-E0402-A00-MSYS

09/24/12

A

Thorsen-Baker + Associates
CONSULTING ENGINEERS
3030 West Streetsboro Road
Richfield, Ohio 44286
(330) 659-6668 Ph.
(330) 659-6675 Fax

Limited brands
LIMITED STORE PLANNING, INC.
d/b/a STORE DESIGN & CONSTRUCTION
Three Limited Parkway • Columbus, Ohio 43230
Telephone: 614-415-7000 • Fax: 614-415-7349

VICTORIA'S SECRET
CAROLINA PLACE PKWY
SUITE 101
SPRINGVILLE, NC 28134
REFRESH | PACKAGE: 2013 (R1315a)/142Fq
NMA/ANGELS GENERATING 00059286 A/E PROJECT #:
DESIGN TYPE: L&S&C PROJECT #:
DATE DESIGNED BY: 9/26/14 RDW
DRAWN BY: TBA
CHECKED BY: JDM

ELECTRICAL DETAILS
DRAWING NUMBER: **E04.02**